

GBTIN-300 Capsules

Gabapentin I.P. 300 mg

"Targeted Relief in Neuropathic & Ortho-Associated Nerve Pain"

Marketed by: Human Orthocare

A Subsidiary of Human Biolife India Pvt. Ltd.

www.humanorthocare.com



Product Overview

Composition (per capsule):

Gabapentin I.P. – 300 mg

Key Features:

- Potent antineuropathic agent
- Controls hyperexcitable neuronal activity
- Effective in chronic neuropathic & musculoskeletal pain
- Safe for long-term use in ortho patients





Mechanism of Action



Gabapentin

Binds to **$\alpha 2\text{-}\delta$ subunit of voltage-gated calcium channels**



Nerve Stabilisation

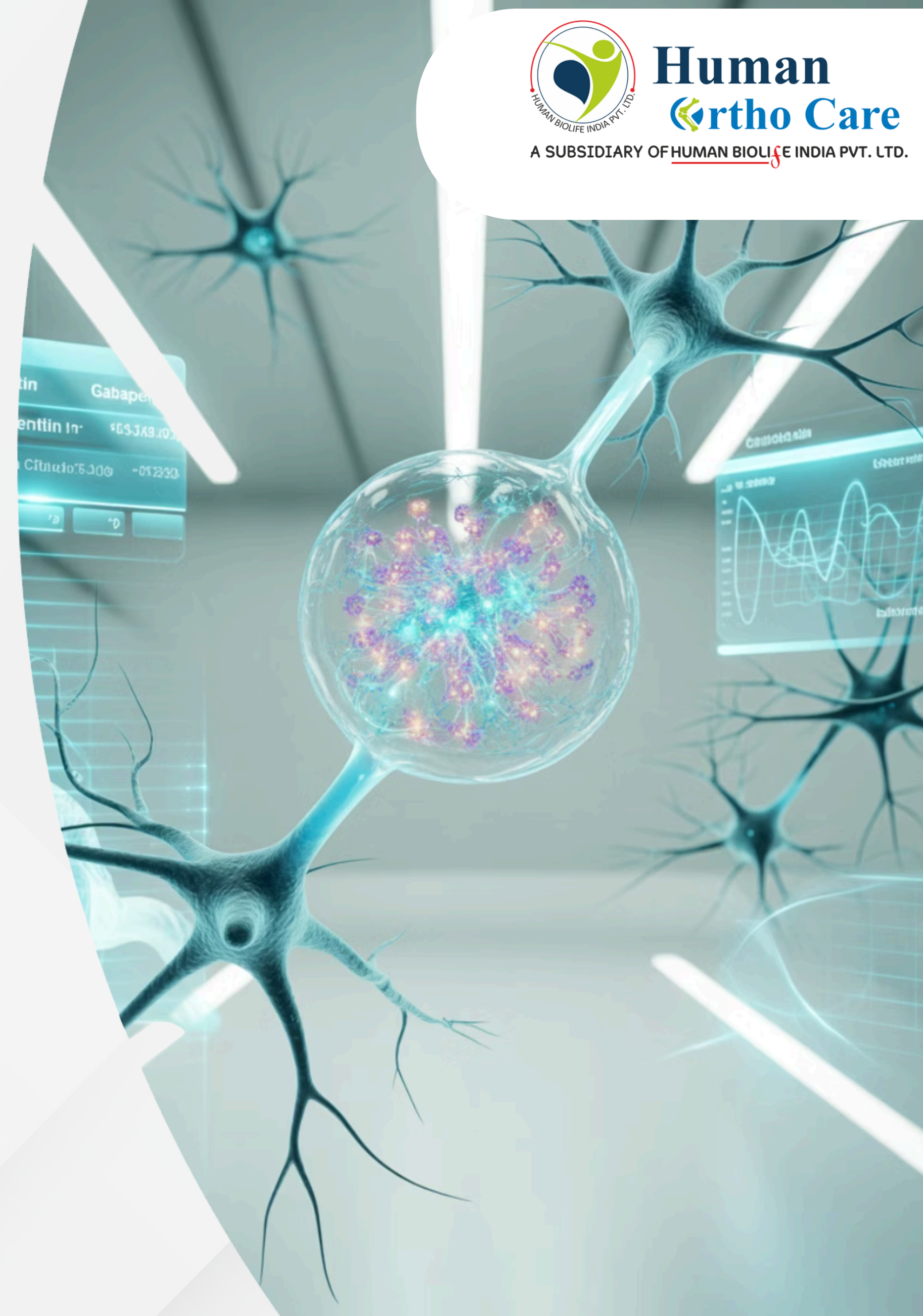
Stabilizes nerve activity → relieves neuropathic pain

☑ Result → Reduced pain perception, improved mobility & sleep quality



Neurotransmitter Control

↓ Release of excitatory neurotransmitters (glutamate, substance P)



Indications

GBTIN-300 is recommended for:

- **Neuropathic pain associated with lumbar spondylosis & disc disease**
- **Post-herpetic neuralgia**
- **Diabetic peripheral neuropathy**
- **Sciatica & radiculopathy**
- **Chronic musculoskeletal pain with neuropathic component**
- **Adjunct in post-traumatic nerve pain**

Clinical Advantages

Key Benefits of GBTIN-300:

Selective Action

Selective action on neuropathic pain pathways

Quality Improvement

Improves **pain scores, sleep quality & QOL**

Safety Profile

Non-addictive, minimal drug interactions

Combination Therapy

Can be safely combined with NSAIDs & muscle relaxants

Clinical Recognition

Widely recommended in ortho & neuro pain management

Comparison with Other Agents

Parameter	Gabapentin (GBTIN-300)	Tricyclics (TCA)	NSAIDs
Neuropathic pain relief	✓ Strong	✓ Moderate	✗ Poor
Onset of action	✓ Fast (1 week)	⚠ Slower	✓ Fast
Tolerability	✓ High	✗ Sedation, dry mouth	✗ GI risk
Long-term use	✓ Safe	⚠ Limited	✗ Unsafe (GI/renal)

Dosage & Administration

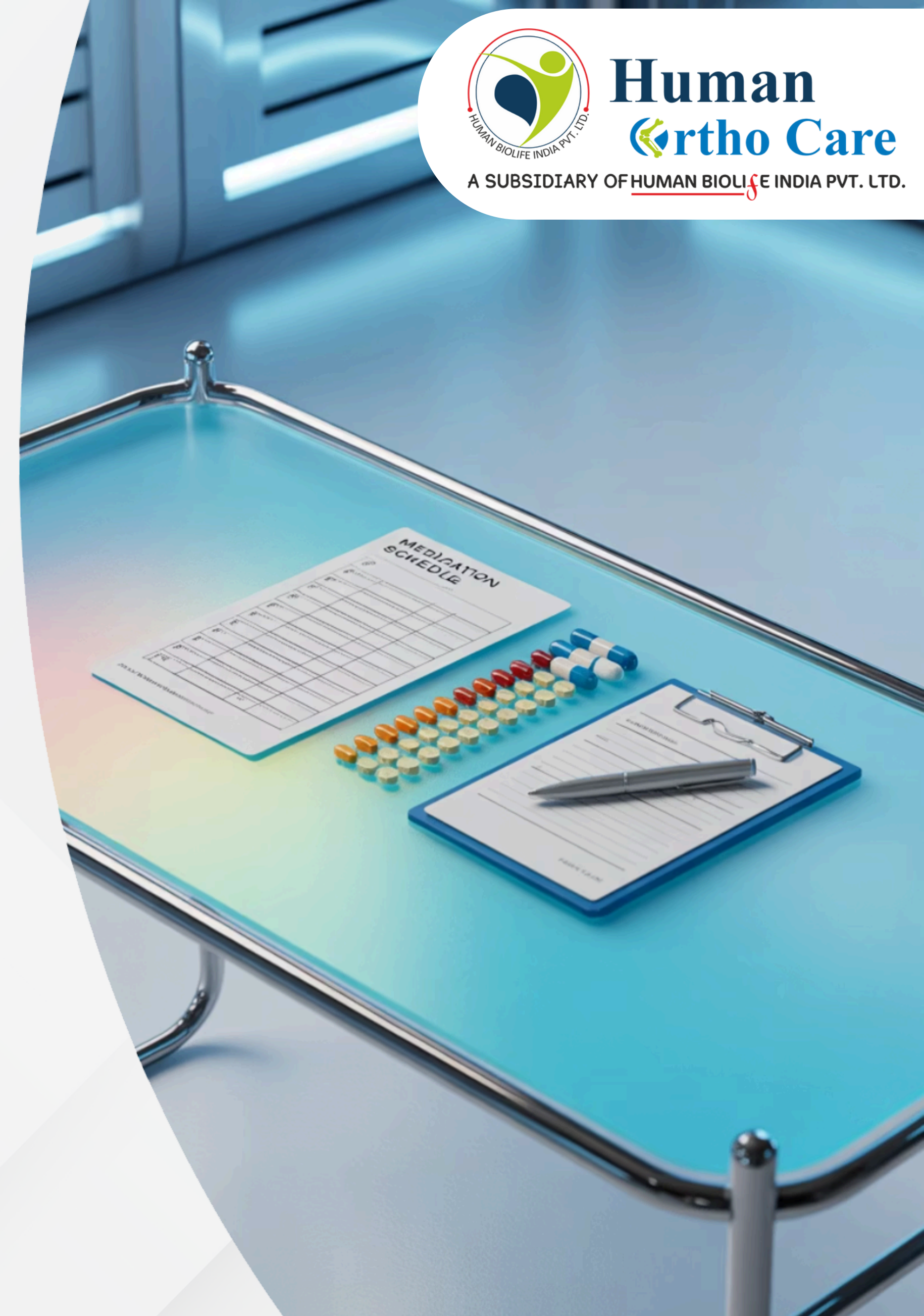
Recommended Dose:

- Start with **300 mg once daily** (bedtime)
- Gradually titrate up as tolerated (up to 900–1800 mg/day)
- Individualised based on patient response



Special Note:

Dose adjustment
required in renal
impairment



Safety & Tolerability

Generally Well-Tolerated

Common: mild dizziness, somnolence, fatigue

Usually transient & dose-related

Contraindications:

- Hypersensitivity to Gabapentin
- Severe renal impairment without dose adjustment



Why Prescribe GBTIN-300?

Doctor's Ortho Choice For:



Effective Control

Effective control of neuropathic pain



Long-term Safety

Safe for long-term management



Patient Mobility

Enhances patient mobility & compliance



Combination Therapy

Complements NSAIDs, muscle relaxants & physiotherapy



Trusted Brand

Trusted brand from Human Orthocare



**Human
Ortho Care**

A SUBSIDIARY OF HUMAN BIOLIFE INDIA PVT. LTD.

Contact Us

Step into care that moves you forward.

Use with clinical discretion, especially in high-risk orthopedic conditions.

HumAn Orthocare – A Subsidiary of Human Biolife India Pvt. Ltd.

For medical queries or collaboration:



www.humanorthocare.com